

# Southeastern Refractory

HOT PATCH

# Ready for Patch



# Shotcreting Patch



# Finishing Shotcreting



# Rebuild of 35 ton melter



# 35 ton Rebuild Starting Steel work





# Forming Hot wall 30 ton melter



# Hot Wall Finished





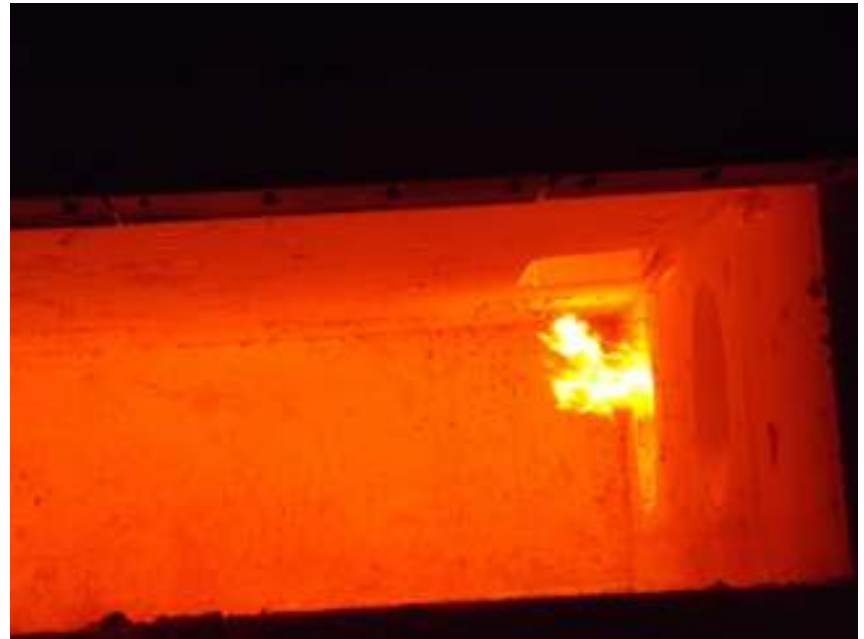
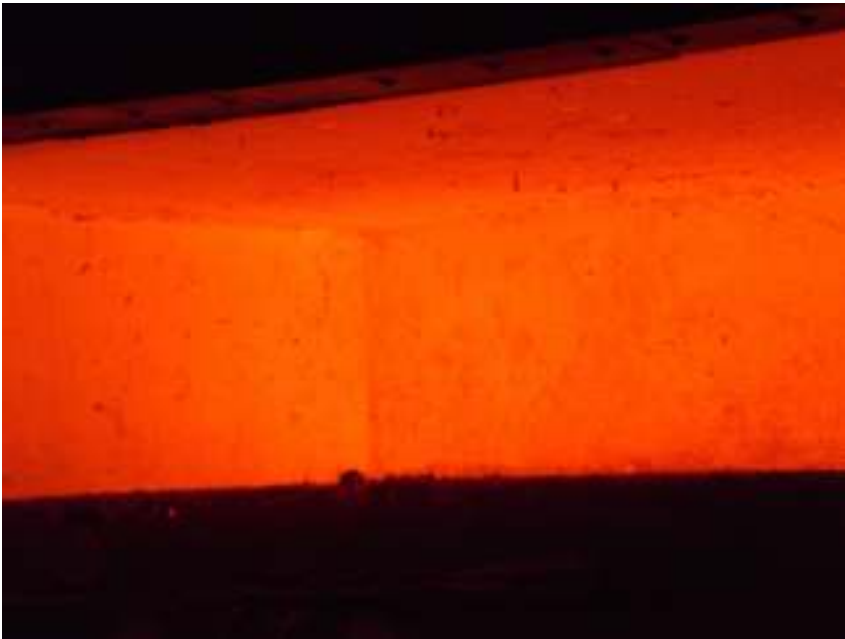
# Roof Forming



# Well forming



# 35 ton Finished



# 12 ton furnace



# 12 ton Furnace finished





# 35 ton melter after one year of production



# 35 ton melter after 12 months of production



# Arch Patching



# Degasser hoods



# A shotcrete repair over brick





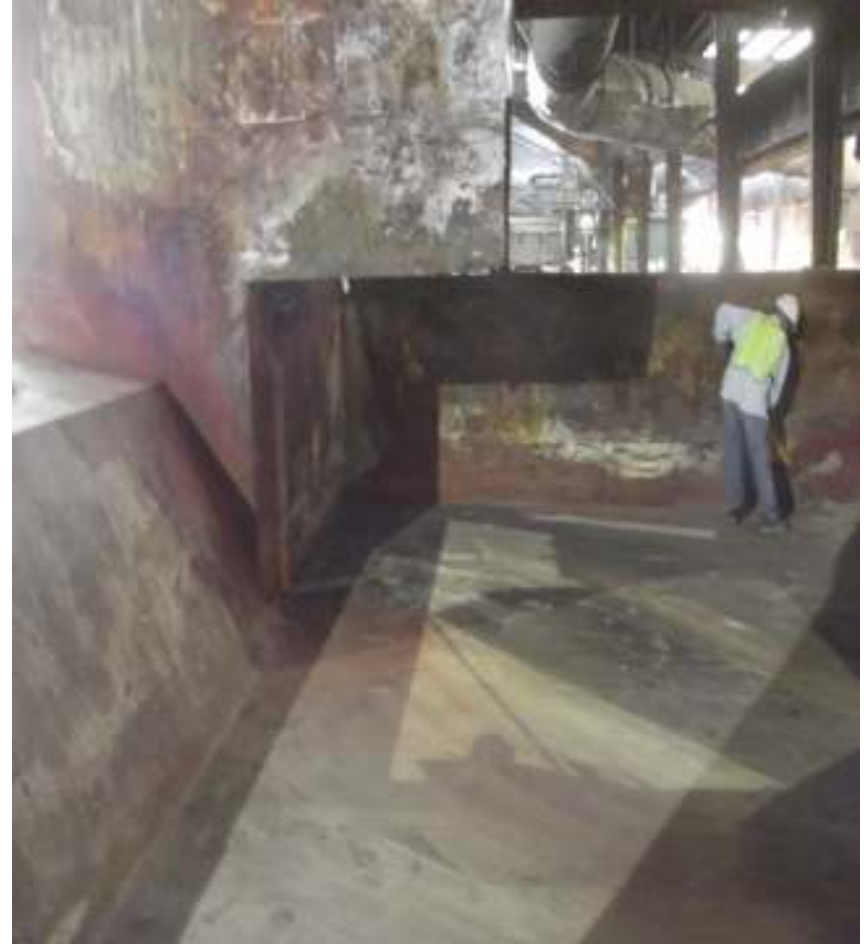
# Shotcrete over brick



# 125 ton Melter rebuild



# 125 ton melter tear out Completed



# 125 ton melter steel work started





# 125 ton Melter Steel work being completed





# 125 ton Steel work being completed



# 125 ton Melter forming started



# 125 ton melter forming started





# 125 ton Hot wall Forming



# 125 ton melter finished

